

# KING HEATED UNDERBLANKET

## Product Instructions

Product No. 2500458.1

**vonhaus**

## Let's get started!

Visit our product hub for useful tips and tricks on getting the most out of your new product.

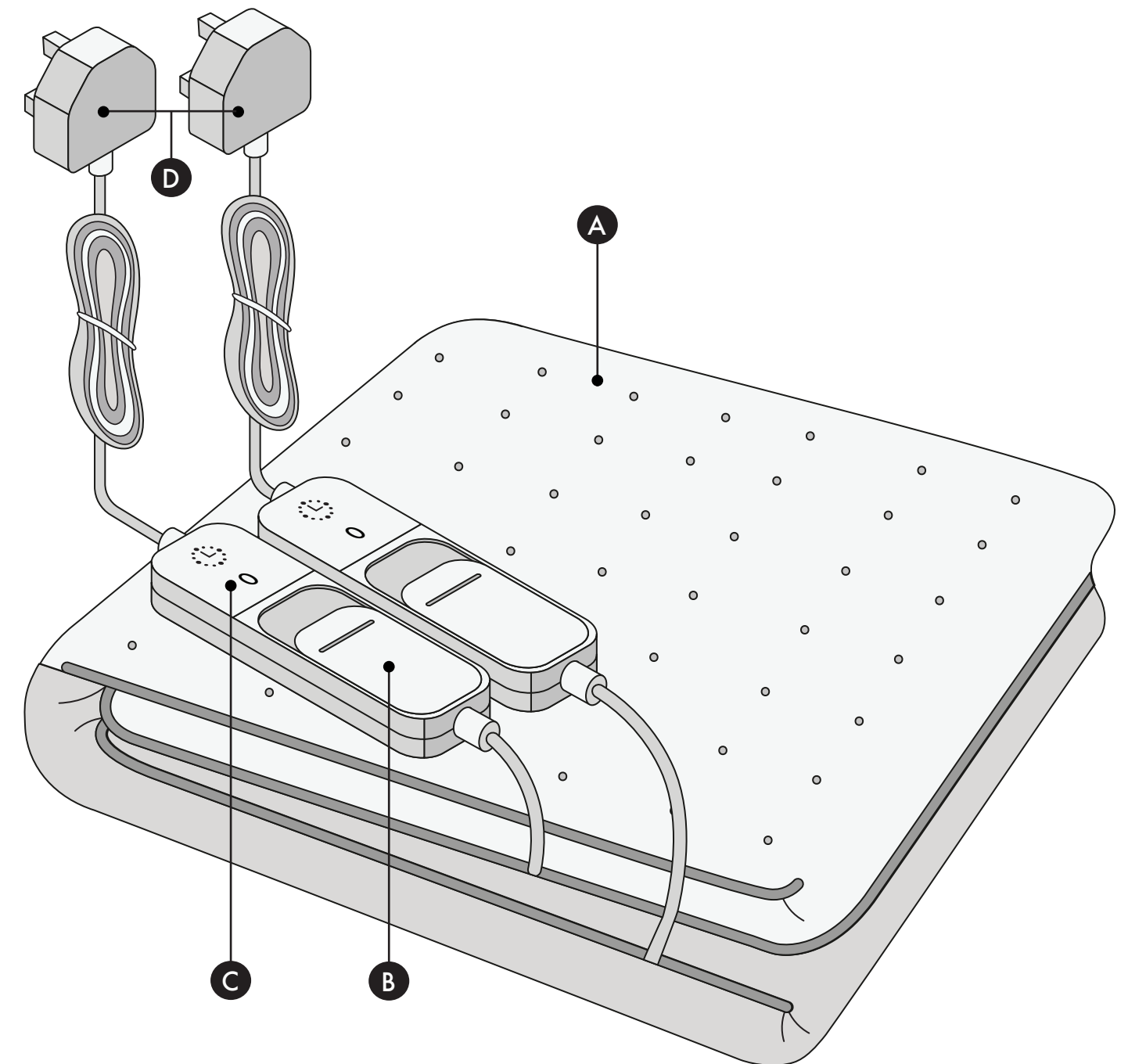
## SCAN ME



**Need further help?**  
[support@vonhaus.com](mailto:support@vonhaus.com)

**See our full range at**  
[www.vonhaus.com](http://www.vonhaus.com)

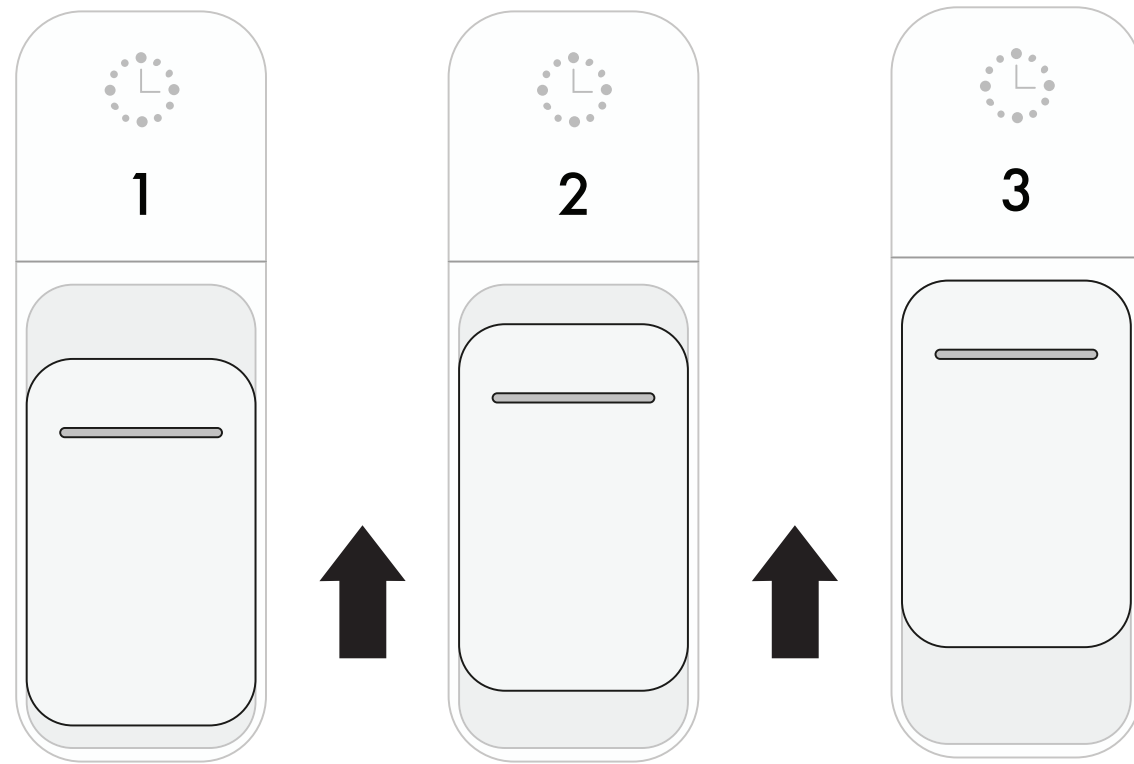
## Product Diagram



- 1. Heated Blanket
- 2. Controller (X2)

- C. Digital Displays (X2)
- D. Plug (X2)

## Operation



### Placement

- Place between mattress and bottom sheet only
- Never place directly on people

### Controls

This model has two separate controls - one for each side of the blanket

### Getting Started

1. For best results, warm the bed 30 minutes before use (setting 3)
2. Plug blanket into mains outlet
3. Turn control knob from position 0 to position 1
4. Red power indicator will light up
5. Blanket will gradually warm up (more noticeable under a duvet)

### Adjusting Temperature

- **Position 1:** Low heat (for continuous/overnight use)
- **Position 2:** Medium heat (for warming up only)
- **Position 3:** High heat (for warming up only)

Always switch to position 1 before falling asleep

### Turning Off

- Turn switch to position 0
- Red power indicator will go off
- Unplug from mains outlet

Blanket automatically turns off after 3 hours for safety  
To restart after auto-off: turn control to 0 and hold for 5 seconds

## Usage & Safety



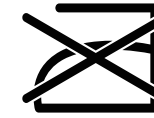
Please read all instructions carefully before use and retain for future reference.



Do not use outdoors.



Unsuitable for children under 3.



Do not iron.



Do not wring dry.



Do not use folded or tucked.



Do not dry clean.



Do not bleach.



Do not pierce or use sharp objects near the blanket.



Do not tumble dry.



Do not wash above  
30°C / 86°F

# Usage & Safety

## Cleaning Your Underblanket

### Before Cleaning

1. Unplug from mains and allow to cool for at least 10 minutes
2. Detach the control cable from the blanket

### Washing Instructions

- Hand washing is recommended
- Machine washing on gentle cycle is acceptable

**For hand washing:** soak in lukewarm water with mild detergent and gently squeeze

### Drying Instructions

- Do not use a hair dryer
- Dry naturally by laying flat on a surface
- Stretch out to maintain shape while drying

### Final Steps

- Rinse thoroughly to remove all detergent
- Ensure blanket is completely dry before using again
- Store flat in a clean, dry place

## Safety Warnings

### Before Use

- Inspect blanket before each use
- Use only with the provided controller
- Ensure your power supply matches the voltage on rating plate
- Never use while folded, creased or wrapped up

## Proper Placement

- Use corner straps to attach firmly to mattress
- Ensure blanket won't crease during use
- Keep controller and cable on top of bedding, never under the blanket
- For adjustable beds, prevent cable from getting caught in hinges
- Never leave blanket unattended during use
- High settings may cause skin burns
- Never use when wet or in bathrooms
- Keep controller and cables dry
- Unplug immediately if blanket falls into water
- Don't pull or carry blanket by its cable
- If using a pacemaker, consult your doctor first

## Who Should Not Use

- Children under 3 years
- Children 3-7 without proper supervision
- Infants or people unable to sense heat
- Anyone unable to operate controls safely

## Care & Storage

- Let cool completely before folding
- Store in original packaging in a dry place
- Fold cable carefully to prevent damage
- Don't place items on top during storage

## Technical Specifications

- Rated Voltage: 220-240V
- Rated Power: 55-60W
- Rated Frequency: 50/60Hz
- Dimensions: 200x150cm
- Off Mode Consumption: 0.47W

# Legal

## Disposal Information

Please recycle where facilities exist. Check with your local authority for recycling advice.

## Customer Service

If you are having difficulty using this product and require support, please contact [support@vonhaus.com](mailto:support@vonhaus.com)

## Warranty

To register your product and find out if you qualify for a free extended warranty please go to [www.vonhaus.com/warranty](http://www.vonhaus.com/warranty)

Please retain a proof of purchase receipt or statement as proof of the purchase date.

The warranty only applies if the product is used solely in the manner indicated in the warnings page of this manual, and all other instructions have been followed accurately.

Any abuse of the product or the manner in which it is used will invalidate the warranty.

## Returns

Returned goods will not be accepted unless re-packaged in its original packaging and accompanied by a relevant and completed returns form. This does not affect your statutory rights.

No rights are given under this warranty to a person acquiring the appliance second-hand or for commercial or communal use.

## Copyright

All material in this instruction manual are copyrighted by DOMU Brands.

Any unauthorised use may violate worldwide copyright, trademark, and other laws.

## Thank You

Thank you for purchasing your product/appliance.

Should you require assistance with your purchase, please contact us at [support@vonhaus.com](mailto:support@vonhaus.com)

VonHaus is a registered trademark of DOMU Brands Ltd.

Made in China for DOMU Brands Ltd.  
Unit 30, Stakehill Industrial Estate  
Middleton, Manchester, M24 2RW

## EU Authorised Representative

Authorised Representative Service  
77 Camden Street Lower  
Dublin, D02 XE80  
Ireland

## Let's get started!

Visit our product hub for useful tips and tricks on getting the most out of your new product.

SCAN ME

