

3500219



Please read all instructions carefully before use and retain for future reference



Protect your eyes



CAUTION Do not immerse in water



Protect your ears



Wear a dust mask



Protect your hands



DO NOT allow two people to use the sander at the same time. Remember that when the sanding belt and disc are in operation they both are turning.



Protective clothing must be worn.



Always ensure the Sanding Belt is correctly tracked before operation see **(Tracking Section)**



CAUTION Potential finger trap/pinchment points.



EN

Please read all instructions carefully before use and retain for future reference.

INTENDED USE Only operate the power tool/machine for its intended purpose and within the parameters specified in this manual.

This power tool/machine is for domestic use only. Do not use outdoors or on wet surfaces.

This power tool/machine is not intended for use by persons with reduced physical, sensory or mental capabilities, or lack of experience and knowledge, unless supervised or given appropriate instruction concerning the product's use by a person responsible for their safety.

GENERAL PRECAUTION Do not allow to be used as a toy. Children should be supervised to ensure they do not play with the power tool/machine.

If the power tool/machine is not functioning properly, has been dropped, damaged, left outdoors, or immersed in liquid, do not use, contact DOMU Brands Customer Services.

Do not use the power tool/machine if any parts appear to be faulty, missing or damaged.

Ensure all parts are securely attached before use.

RISK OF PERSONAL INJURY Avoid body contact with earthed or grounded surfaces such as pipes, radiators, ranges and refrigerators. There is an increased risk of electric shock if your body is earthed or grounded.

Prevent unintentional starting. Ensure the switch is in the off position before connecting to the power source and/or battery pack, picking up or carrying the tool. Carrying power tools with your finger on the switch, or energising power tools that are switched on, invites accidents.

Do not operate power tools in explosive atmospheres such as in the presence of flammable liquids, gases or dust. Power tools create sparks which may ignite the dust or fumes.

Always wear eye protection. Any power tool can throw foreign objects into your eyes and cause permanent eye damage. Always wear safety goggles (not glasses) that comply with ANSI safety standard Z87.1. Every day glasses have only impact resistant lenses.

Do not expose power tools to rain or wet conditions. Water entering the power tools will increase the risk of electric shock.

Stay alert, watch what you are doing and use common sense when operating a power tool/machine. Do not use a power tool/machine while you are tired or under the influence of drugs, alcohol or medication. A moment of inattention while operating power tool/machine may result in serious personal injury.

Use personal protective equipment. Always wear eye protection. Protective equipment such as dust mask, non-skid safety shoes, hard hat, or hearing protection used for appropriate conditions will reduce personal injuries.

Remove any adjusting key or spanner before turning the power tool/machine on. A spanner or a key left attached to a rotating part of the power tool/machine may result in personal injury.

Do not overreach. Keep proper footing and balance at all times. This enables better control of the power tool/machine in unexpected situations.

Dress appropriately. Do not wear loose clothing or jewellery.

Keep your hair, clothing and gloves away from moving parts. Loose clothes, jewellery or long hair can be caught in moving parts.

If devices are provided for the connection of dust extraction and collection facilities, ensure these are connected and properly used. Use of dust collection can reduce dust-related hazards.

WORK AREA SAFETY Keep work area clean and well lit. Cluttered or dark areas invite accidents.

Do not operate power tool/machine in explosive atmospheres, such as in the presence of flammable liquids, gases or dust.

Power tool/machine create sparks which may ignite the dust or fumes.

Keep children and bystanders away while operating a power tool/machine. Distractions can cause you to lose control.

GENERAL POWER TOOL USE AND CARE Do not force the power tool/machine. Use the correct power tool/machine for your application. The correct power tool/machine will do the job better and safer at the rate for which it was designed.

Do not use the power tool/machine if the switch does not turn it on and off. Any power tool/machine that cannot be controlled with the switch is dangerous and must be repaired.

Disconnect the plug from the power source and/or the battery pack from the power tool/machine before making any adjustments, changing accessories, or storing power tool/machine tools. Such preventive safety measures reduce the risk of starting the power tool/machine accidentally.

Store idle power tool/machine out of the reach of children and do not allow persons unfamiliar with the power tool/machine or these instructions to operate the power tool/machine.

Power tool/machines are dangerous in the hands of untrained users.

Maintain power tool/machines. Check for misalignment or binding of moving parts, breakage of parts and any other condition that may affect the power tool/machines operation. If damaged, have the power tool/machines repaired before use. Many accidents are caused by poorly maintained power tool/machines.

Keep cutting tools sharp and clean.

Properly maintained cutting tools with sharp cutting edges are less likely to bind and are easier to control.

Use the power tool/machine accessories and tool bits in accordance with these instructions, take into account the working conditions and the work to be performed.

Use of the power tool/machine for operations different from those intended could result in a hazardous situation.

CLEANING & MAINTENANCE Never soak or immerse electrical components and or a component that has a plug attached.

Disconnect the plug from the power source before making any adjustments, changing accessories, or storing. Such preventive safety measures reduce the risk of starting the power tool accidentally.

Ensure the motor has fully stopped before cleaning, clearing a blockage, checking, or carrying out any maintenance on the tool.

Maintain your power tool. Check for misalignment or binding of moving parts, breakage of parts and any other condition that may affect the power tool's operation. If damaged, have the power tool repaired by a qualified repair person before use. Many accidents are caused by poorly maintained power tools.

Keep cutting tools sharp and clean. Properly maintained cutting tools with sharp cutting edges are less likely to bind and are easier to control.

Regularly check external nuts and fixings to ensure vibration caused by normal use has not begun to loosen them.

Store idle power tools out of reach of children and do not allow persons unfamiliar with the power tool or these instructions to operate the Breaker.

Locate the power tool out of reach of children, in a dry,

locked unit.

Make sure that the cord is located so that it will not be stepped on, tripped over, or otherwise subjected to damage or stress.

Remove the plug from the mains socket / battery (where applicable) before carrying out any adjustment or maintenance.

Always store the power tool/machine in a dry place.

If the power cord is damaged, it must be replaced by a qualified service technician.

Keep the ventilation slots and motor housing as free of dirt and dust as possible (where applicable).

Clean the power tool/machine by rubbing it with a clean cloth and blow it clean using low-pressure compressed air is recommended.

Ensure you have all the pieces listed. If you are missing any components, contact our customer services department at

support@domu.co.uk

. DO NOT proceed with assembly if any components are missing.

HAND HELD SANDERS & POLISHERS

For Belt Sanders, Drum Sanders and polishers, the direction of rotation shall be indicated on the tool by an arrow, raised or sunk, or by any other means no less visible and indelible. Hold the Power Tool by insulated gripping surfaces when performing an operation where the fastener may contact hidden wiring or its own cord. Fasteners contacting a 'live' wire may make exposed metal parts of the power tool 'live' and could deliver an electric shock.

TECHNICAL SPECIFICATION

Rated Voltage 230V ~

Rated Power 250W

Rated Frequency 50Hz

No Load Speed 2980/min⁻¹

DECLARATION OF CONFORMITY

We:

DOMU Brands Ltd
5th Floor The Tower
Deva City Office Park
Manchester
M3 7BF

DOMU Brands Ltd
Unit 30, Finlan Road
Stakehill Industrial Estate
Middleton, Manchester
M24 2RW

Declare under our sole responsibility the product:

SKU
3500219

Description

25 x 760mm Belt/ 125mm Disc Sander

Complies with the essential requirements of the following directives:

2006/42/EC
2014/30/EU
2011/65/EU

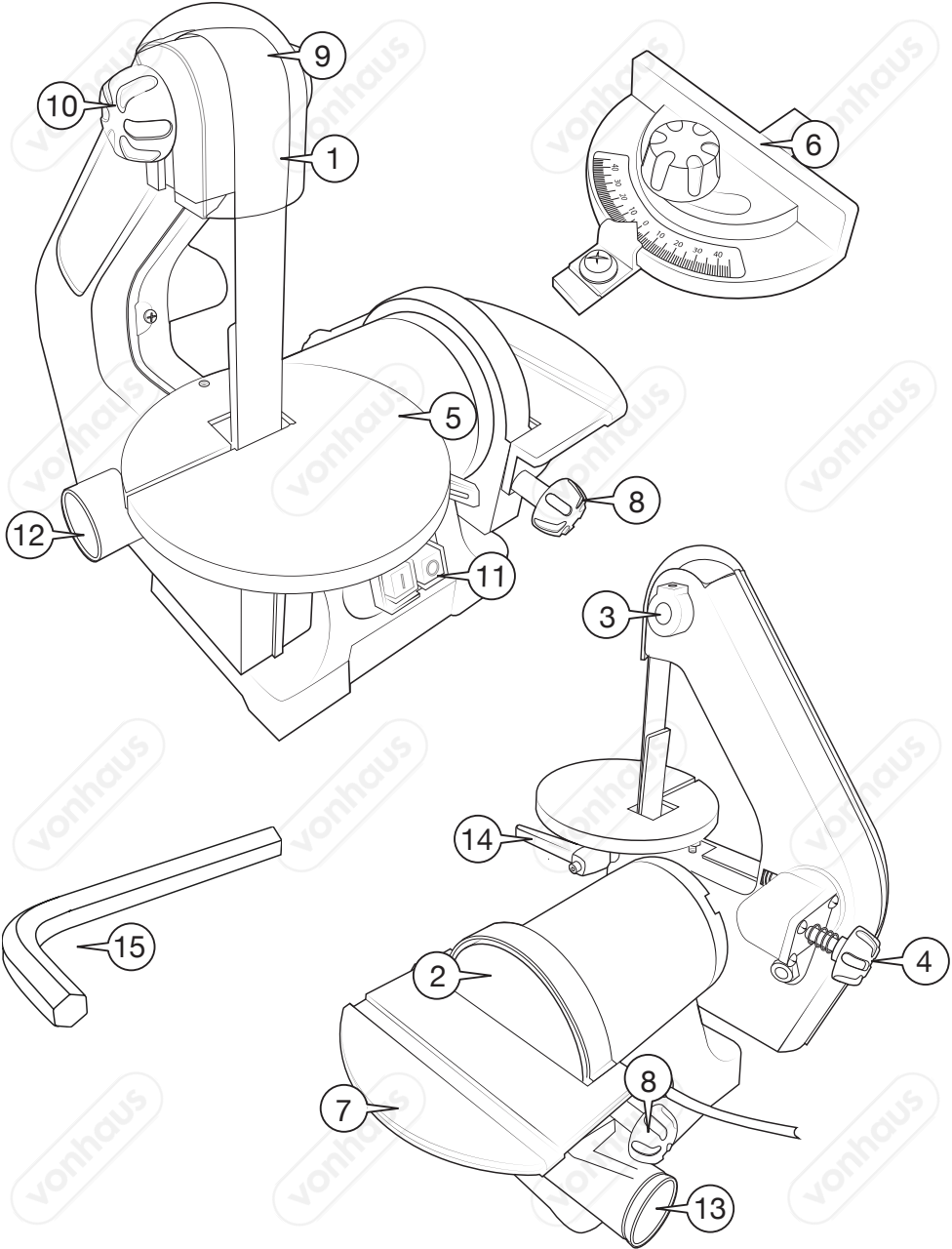
And the Standards:

EN62841-1:2015, EN ISO 12100:2010, EN 55014-1:2006+A1+A2, EN 55014-2:2015, EN 61000-3-2:2014, EN 61000-3-3:2013

Authorised Signatory on behalf of DOMU Brands Ltd.



COMPONENTS



CONTENT LIST

1. 80 Grit Sanding Belt (760 *25mm) 860/min⁻¹
2. 80 Grit Grinding / Sanding Disc (Ø 125mm)
3. Sanding Belt Tensioning Screw
4. Sanding Belt Unlocking Screw
5. 45° Adjustable Belt Table
6. Mitre Guide
7. 45° Adjustable Disc Table
8. Disc Table Adjustment Screws
9. Safety Belt Cover
10. Safety Belt Locking Screw
11. On/Off Switch
12. Sanding Belt Dust Outlet
13. Sanding Disc Dust Outlet Cover
14. Sanding Disc Table Adjustment Lever
15. Hex Key
- 1 x 120 Grit (25*760mm) Sanding Belt
- 1 x 240 Grit (25*760mm) Sanding Belt
- 1x 120 Grit (Ø 125mm) Sanding Disc
- 1x 240 Grit (Ø 125mm) Sanding Disc

SECURING THE SANDER

WORKBENCH: If the Belt and Disc Sander is to be used in a permanent location, it should be fastened securely to a firm supporting surface such as a workbench.

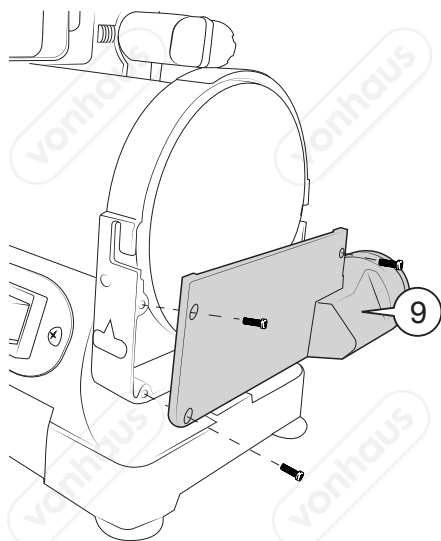
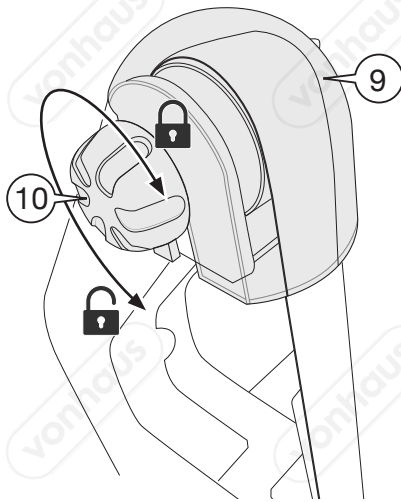
NOTE: Mounting Bolts not supplied.

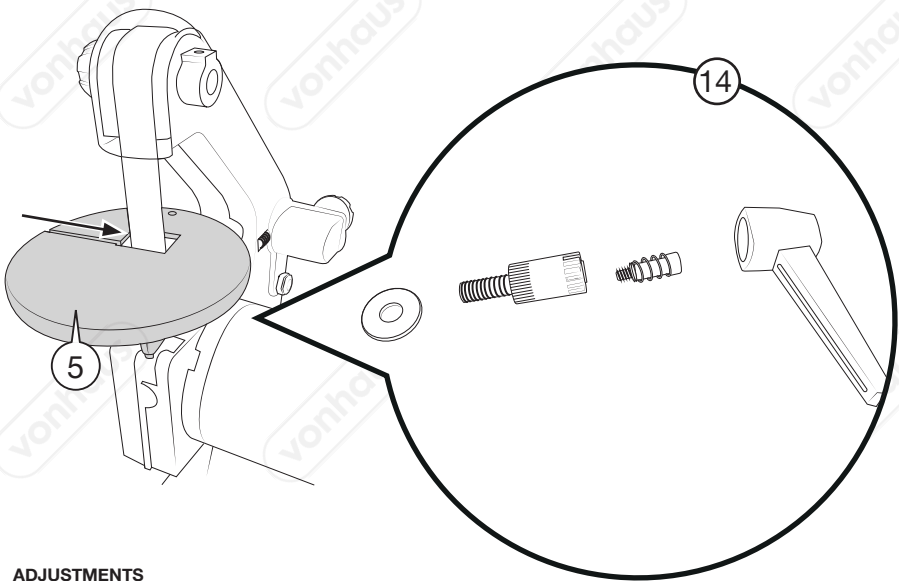
- Place the Bench and Disc Sander in the location you require and mark the 2 holes on the base.
- Drill the holes using a 3/8" Drill Bit.
- Place the Bench and Disc Sander back into the chosen location and align up holes.
- Using the Hex Bolts (Not Supplied) secure the Belt and Disc Sander.

NOTE: Bolt length should be 1.1/2" plus the thickness of the bench top.

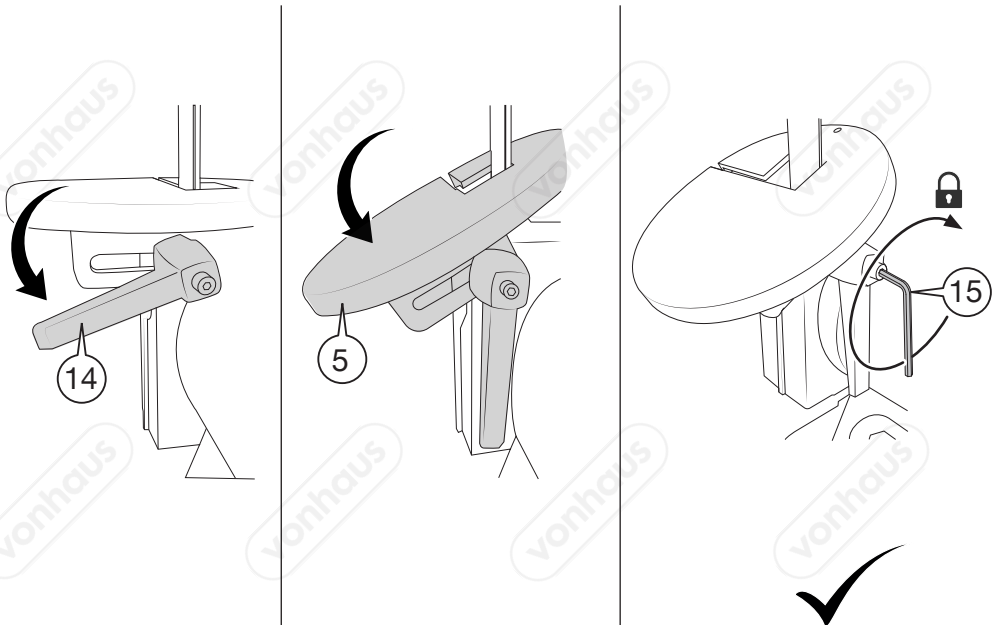
CLAMPING: If your Belt and Disc Sander is to be used as a portable tool, it is recommended you fasten it permanently to a mounting board that can easily be clamped to a workbench or other stable surface.

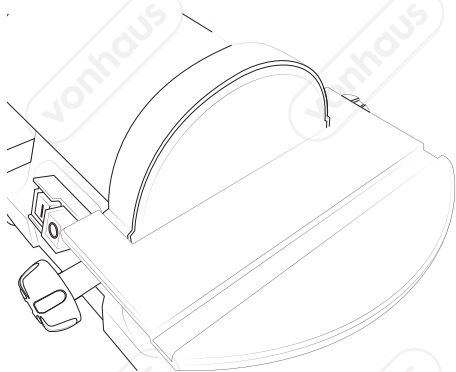
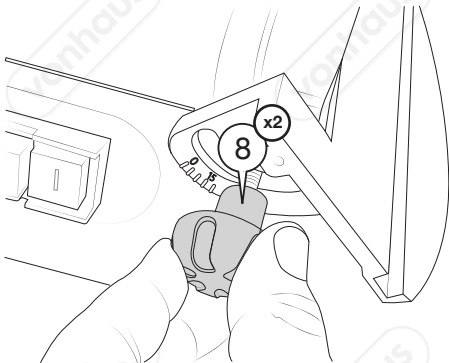
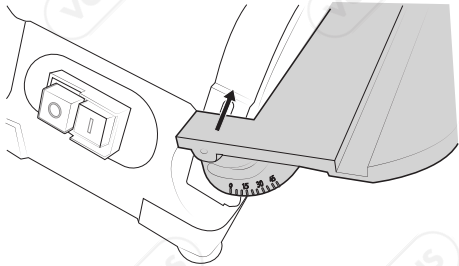
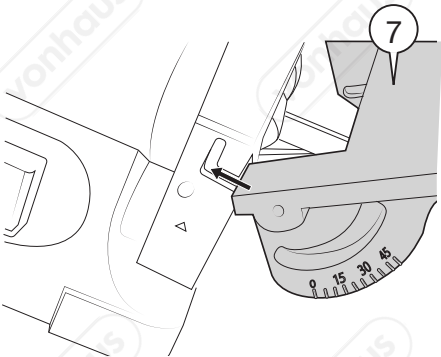
The mounting board should be of sufficient size to avoid tipping while Belt and Disc Sander is in use. Any good grade plywood or chipboard with a 3/4 in. (19 mm) thickness is recommended.



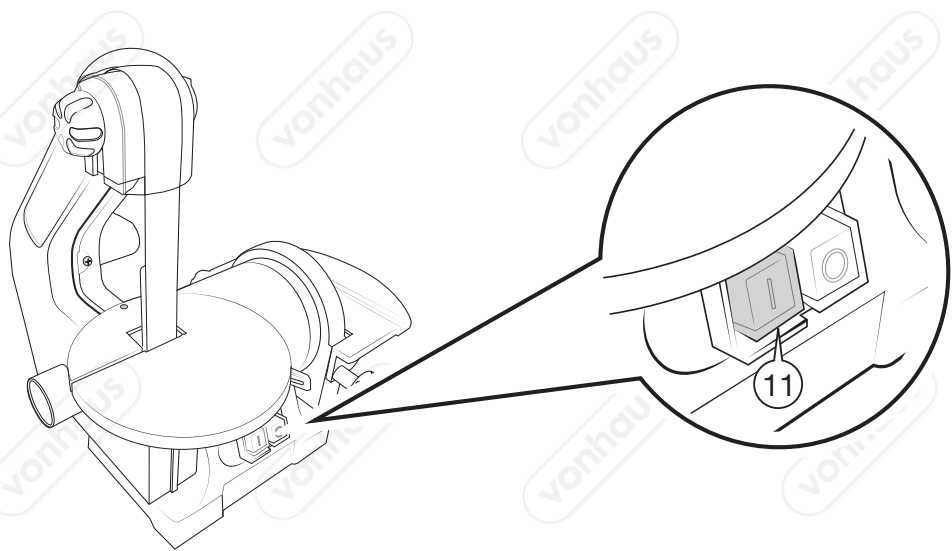


ADJUSTMENTS

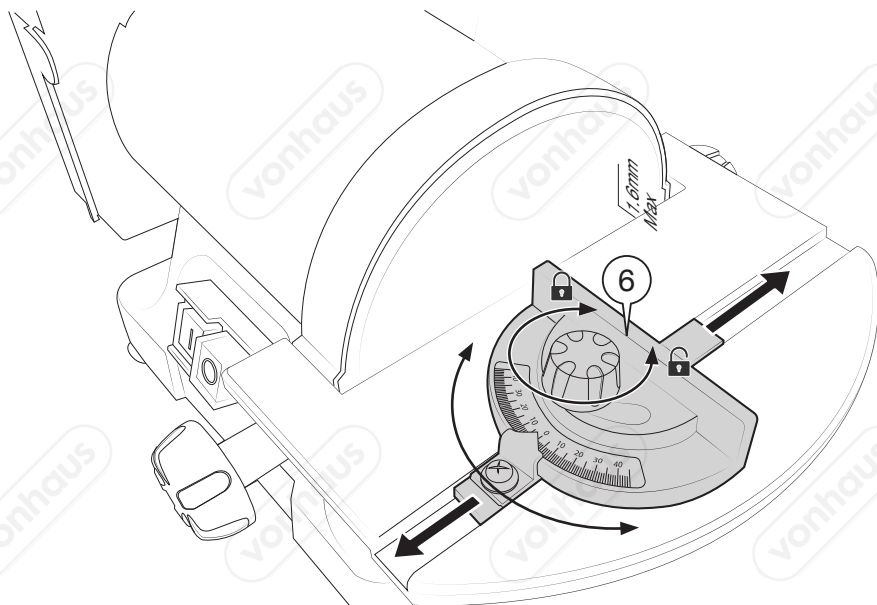




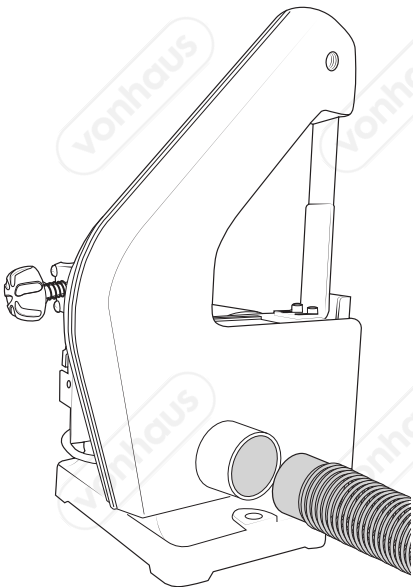
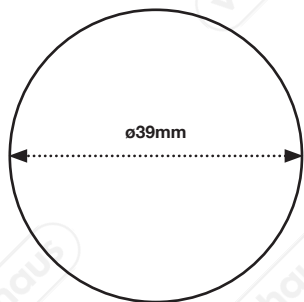
OPERATION



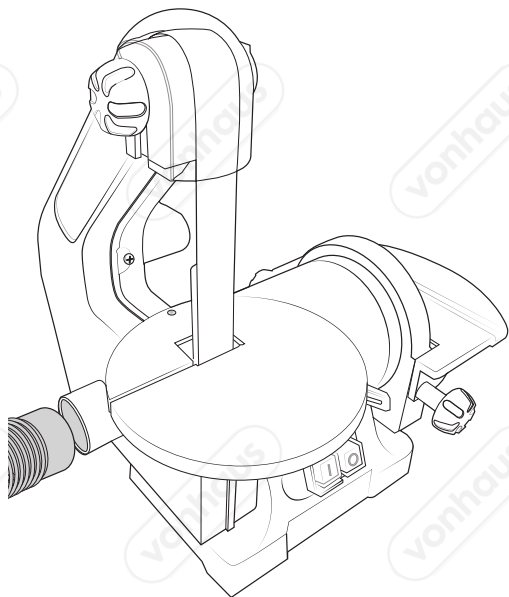
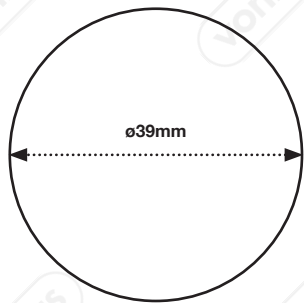
MITRE GUIDE ADJUSTMENTS



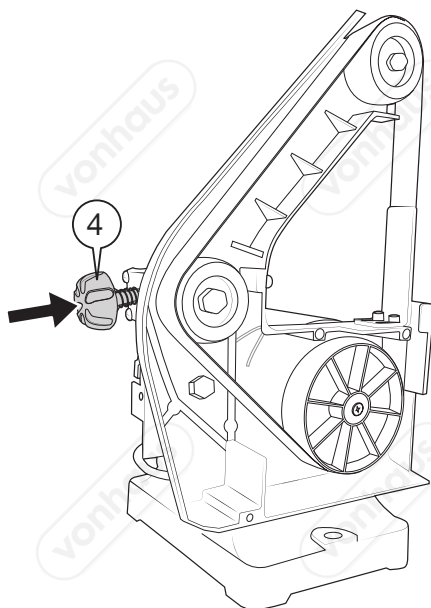
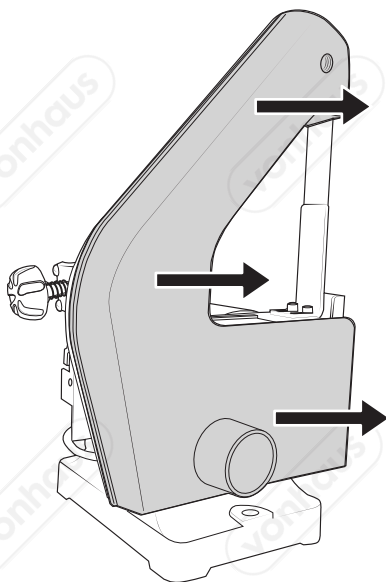
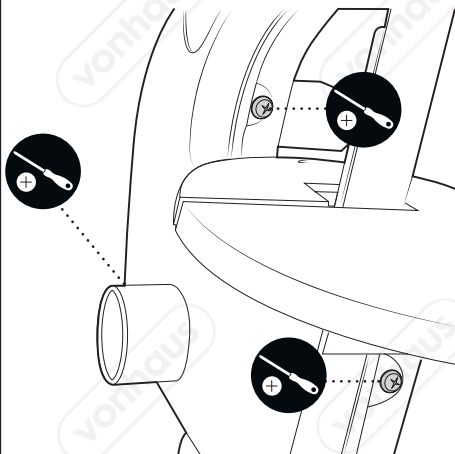
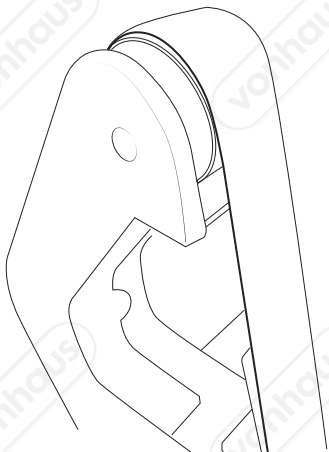
BELT DUST EXTRACTION



DISC DUST EXTRACTION



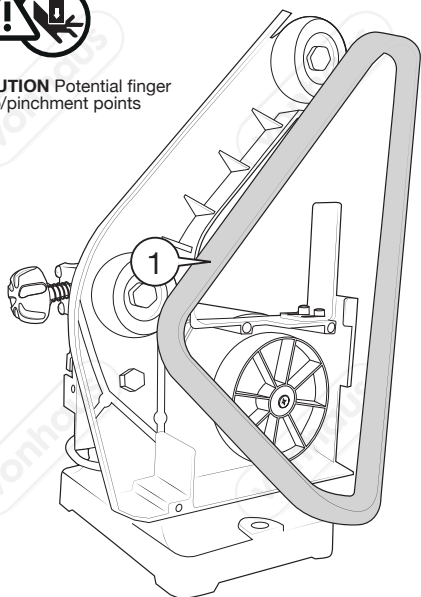
CHANGING THE SANDING BELT (BELT SIZE 760*25MM) 860/MIN⁻¹



CHANGING THE SANDING BELT (BELT SIZE 760*25MM) 860/MIN⁻¹

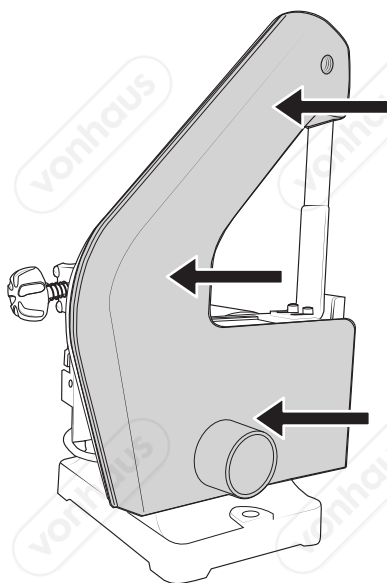
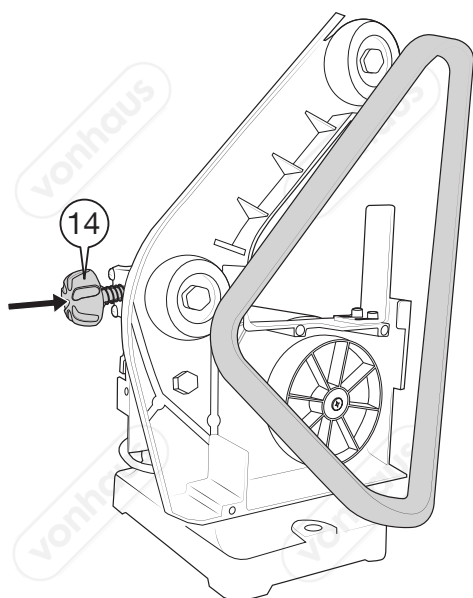
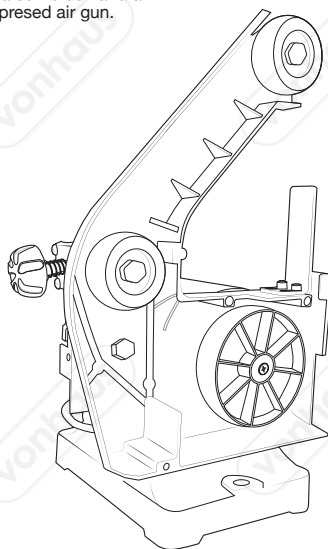


CAUTION Potential finger trap/pinchment points

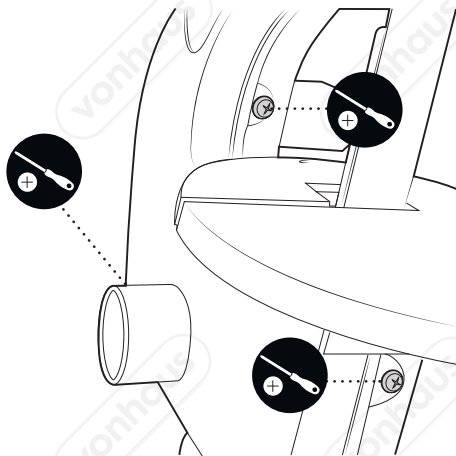


Remove old sanding belt.

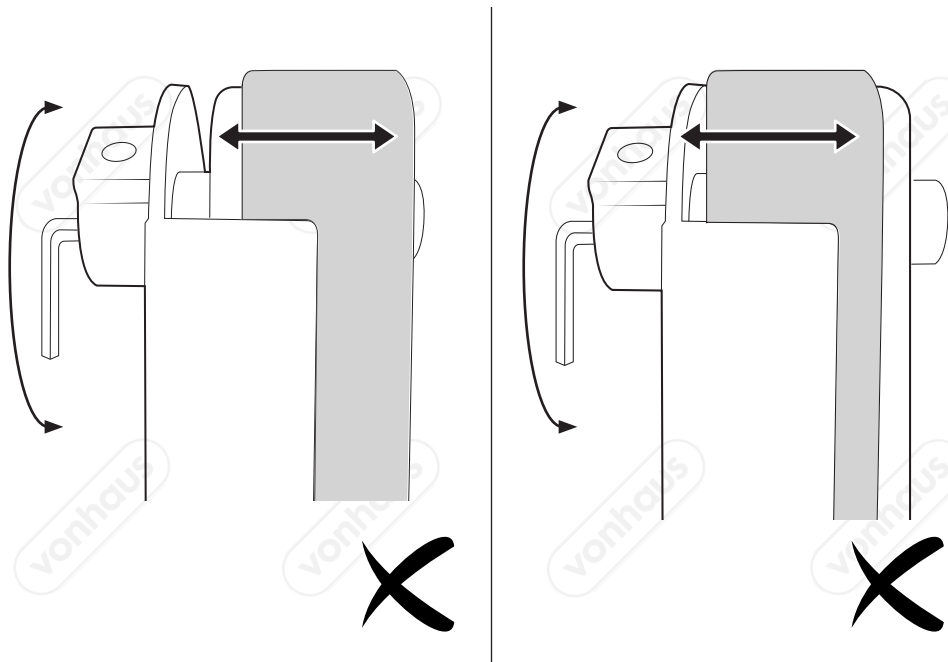
Clean excess dust and debris with a soft brush and a compressed air gun.



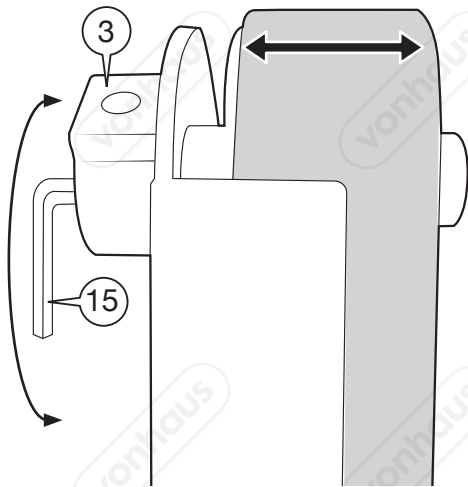
CHANGING THE SANDING BELT (BELT SIZE 760*25MM) 860/MIN⁻¹



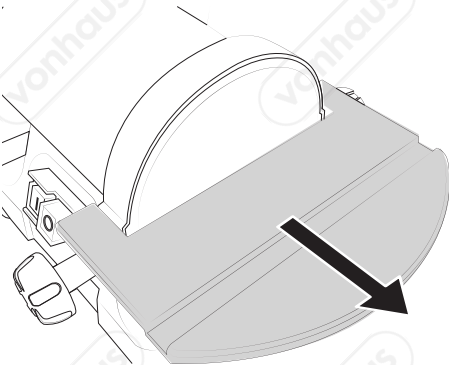
ALIGNING THE SANDING BELT



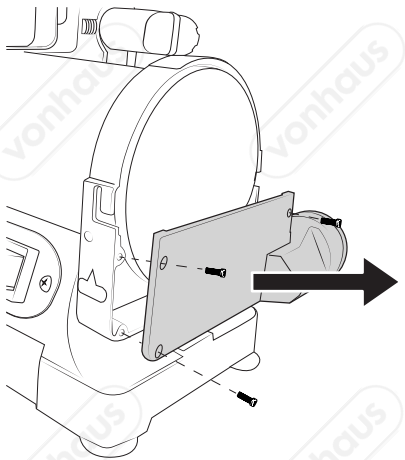
ALIGNING THE SANDING BELT



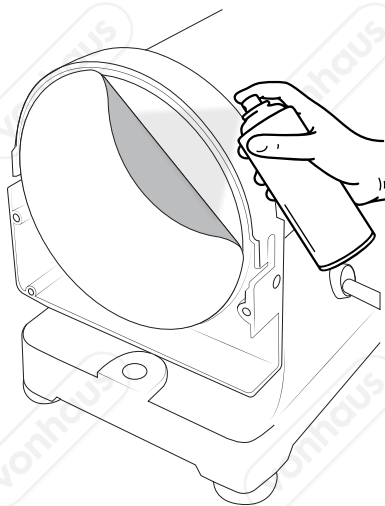
CHANGING THE SANDING DISC (DISC 125MM)



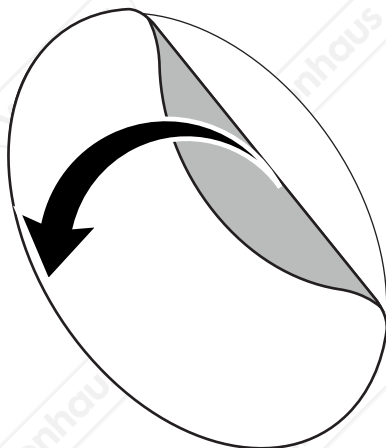
Remove the Sanding Disc Table.



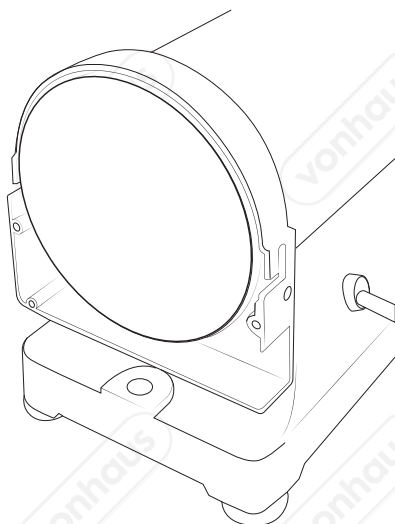
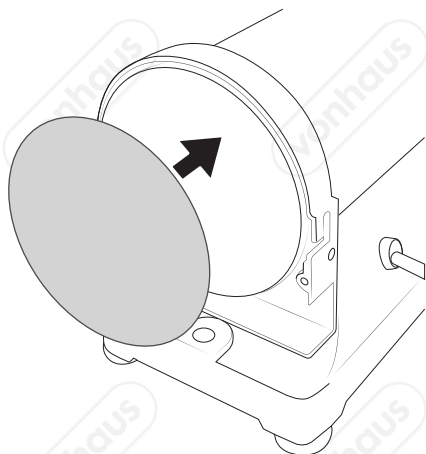
CHANGING THE SANDING DISC (DISC 125MM)



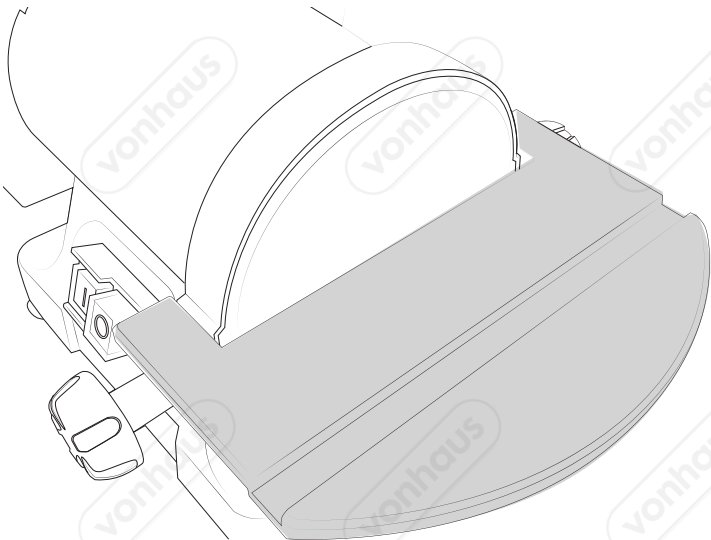
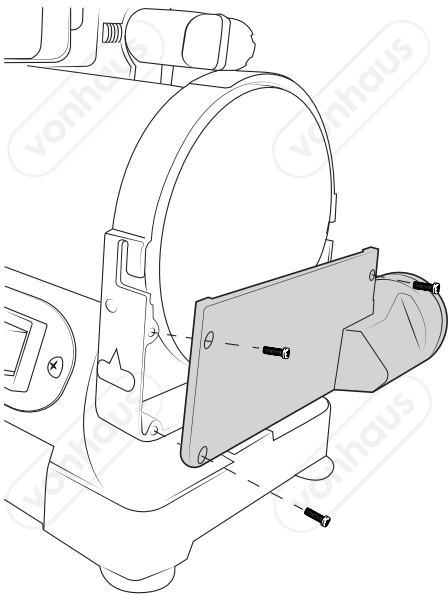
Remove the old Sanding Disc using a solvent remover.



Peel the backing paper off the new Sanding Disc.

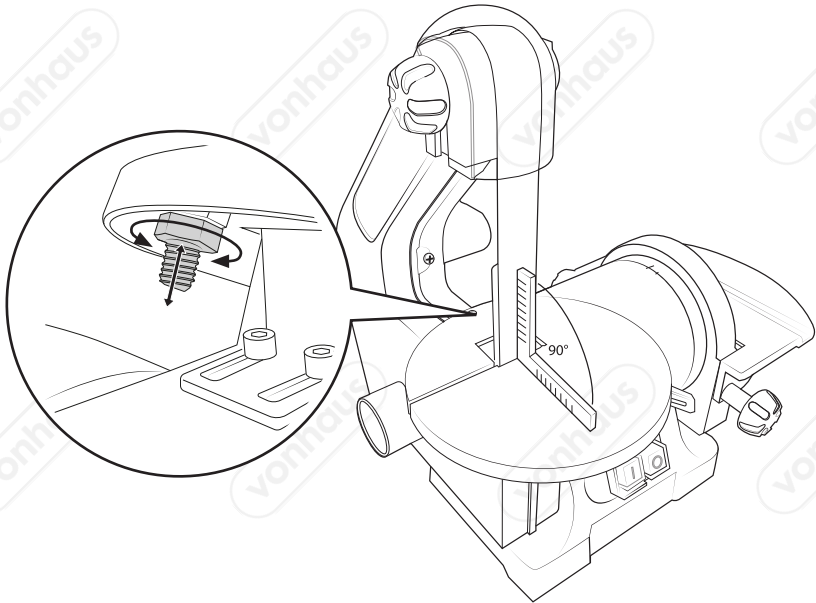


CHANGING THE SANDING DISC (DISC125MM)

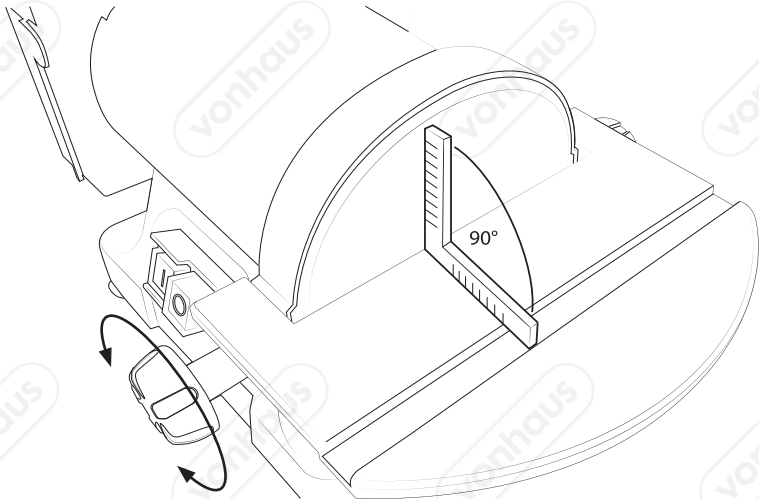


Re-install the Sanding Disc Table as previously shown.

SANDING DISC TABLE ALIGNMENT



SANDING DISCTABLE ALIGNMENT



| PROBLEM | CAUSE | SOLUTION |
|--|---|---|
| Deep sanding grooves or scars in the workpiece. | 1. Sanding belt/disc grit is too coarse for the desired finish. | 1. Use a finer-grit sanding accessory. |
| | 2. Workpiece sanded across the grain. | 2. Sand with the grain of the wood. |
| | 3. Too much sanding force on the workpiece. | 3. Reduce pressure on workpiece while sanding. |
| | 4. Workpiece held still against the belt-disc for too long. | 4. Keep workpiece moving while sanding on the sanding accessory. |
| Sanding surface clogs quickly. | 1. Too much pressure against belt/disc. | 1. Reduce pressure on workpiece while sanding. |
| | 2. Sanding softwood. | 2. Use different stock, different sanding accessories. If you are certain of using softwood this will occur frequently. Plan on cleaning or replacing belts/discs frequently. |
| Burns on workpiece. | 1. Using a sanding grit that is too fine. | 1. Use a coarser-grit sanding accessory. |
| | 2. Using too much pressure. | 2. Reduce pressure on workpiece while sanding. |
| | 3. Work held still for too long. | 3. Do not keep workpiece in one place for too long. |
| Motor will not start - Fuses or circuit breakers tripping or blowing. | 1. Short circuit in line, cord or plug. | 1. Inspect cord or plug for damaged insulation and shorted wires. |
| | 2. Short circuit in motor or loose connections. | 2. Inspect all connections on motor for loose or shorted terminals and/or worn insulation. |
| | 3. Incorrect fuses or circuit breakers in power line. | 3. Install correct fuses or circuit breakers or switch tool to an appropriately sized circuit. |
| Motor overheats. | 1. Motor overloaded. | 1. Reduce load on motor (pressure on object being sanded). |
| | 2. Extension cord too long and of insufficient gauge | 2. Utilize an extension cord of appropriate gauge and length or plug tool directly into outlet. |
| Motor stalls (resulting in blown fuses or tripped circuit) | 1. Low voltage. | 1. Correct low voltage conditions (for example: improper extension cord length and/or gauge). |
| | 2. Incorrect fuses or circuit breakers in power line. | 2. Install correct fuses or circuit breakers or plug tool into an appropriate circuit, matched to an appropriate fuse or breaker. |
| | 3. Excessive sanding pressure overloads motor. | 3. Reduce the load on the motor. |

| PROBLEM | CAUSE | SOLUTION |
|--|--|---|
| Machine slows when operating. | 1. Feed rate too great. | 1. Reduce the rate at which the workpiece is fed onto belt or disc. |
| | 2. Undersized circuit or use of undersized extension cord. | 2. Ensure circuit wires or extension cords are proper gauge, or eliminate use of extension cords. |
| Machine vibrates excessively. | 1. Incorrect motor mounting. | 1. Tighten/strengthen motor mountings |
| | 2. Incorrect sanding-belt tension. | 2. Adjust tension adjustment knob. Follow belt-tensioning/tracking instructions in this manual. |
| | 3. Weak or broken tension spring. | 3. Have tension spring replaced by service technician. |
| | 4. Broken/defective sanding accessories. | 4. Replace sanding belt/disc. |
| Workpiece frequently gets pulled out or operators hand. | 1. Not supporting the workpiece against the stop. | 1. Use the platen (backstop) or mitre gauge to support the workpiece. |
| | 2. Attempting to sand (unaided) a workpiece that is too small. | 2. Use another hand tool or jig to grasp or hold the workpiece. |
| Workpiece lifts up from the sanding disc/table. | 1. Sanding on the "up" side of the wheel. | 1. Sand on left hand side of sanding disc (as operator faces the disc). |

vonhaus

vonhaus

vonhaus

vonhaus

vonhaus

vonhaus

vonhaus

vonhaus

vonhaus

vonhaus

vonhaus

vonhaus

vonhaus

vonhaus

vonhaus

vonhaus



EN

DISPOSAL INFORMATION Please recycle where facilities exist. Check with your local authority for recycling advice.

CUSTOMER SERVICE If you are having difficulty using this product and require support, please contact **support@domu.co.uk**

WARRANTY To register your product and find out if you qualify for a free extended warranty please go to **www.vonhaus.com/warranty**. Please retain a proof of purchase receipt or statement as proof of the purchase date. The warranty only applies if the product is used solely in the manner indicated in the warnings page of this manual, and all other instructions have been followed accurately. Any abuse of the product or the manner in which it is used will invalidate the warranty. Returned goods will not be accepted unless re-packaged in its original packaging and accompanied by a relevant and completed returns form. This does not affect your statutory rights. No rights are given under this warranty to a person acquiring the appliance second-hand or for commercial or communal use.

COPYRIGHT All material in this instruction manual are copyrighted by DOMU Brands. Any unauthorised use may violate worldwide copyright, trademark, and other laws.

THANK YOU

Thank you for purchasing your product/appliance. Should you require further assistance with your purchase, you can contact us at **support@domu.co.uk**

VonHaus is a registered trademark of DOMU Brands Ltd. Made in China for DOMU Brands. M24 2RW.